



### Favorite Characters



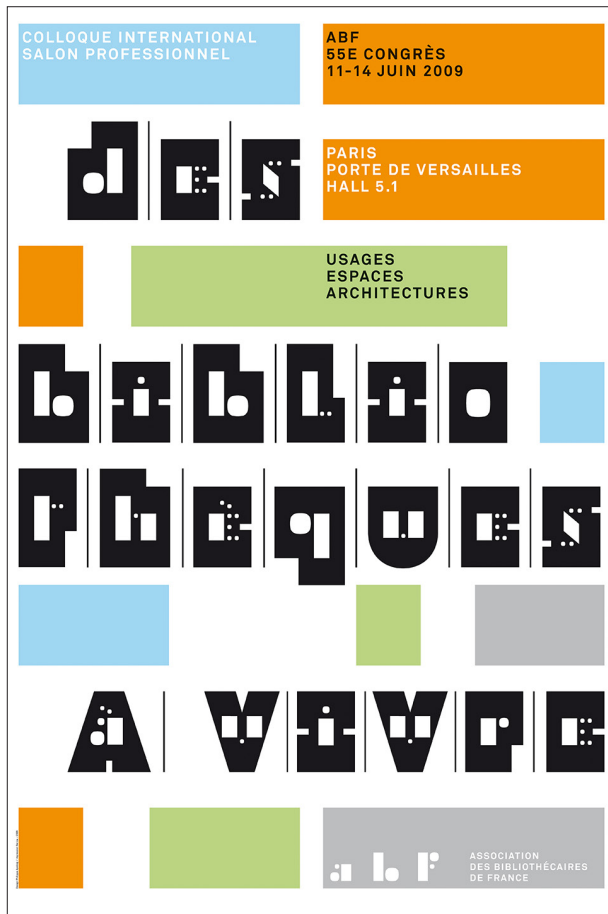
### Weights





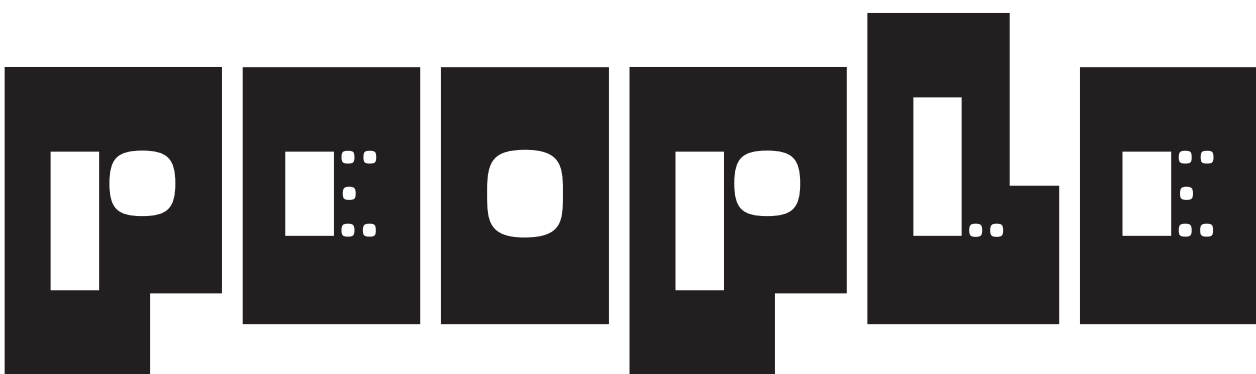
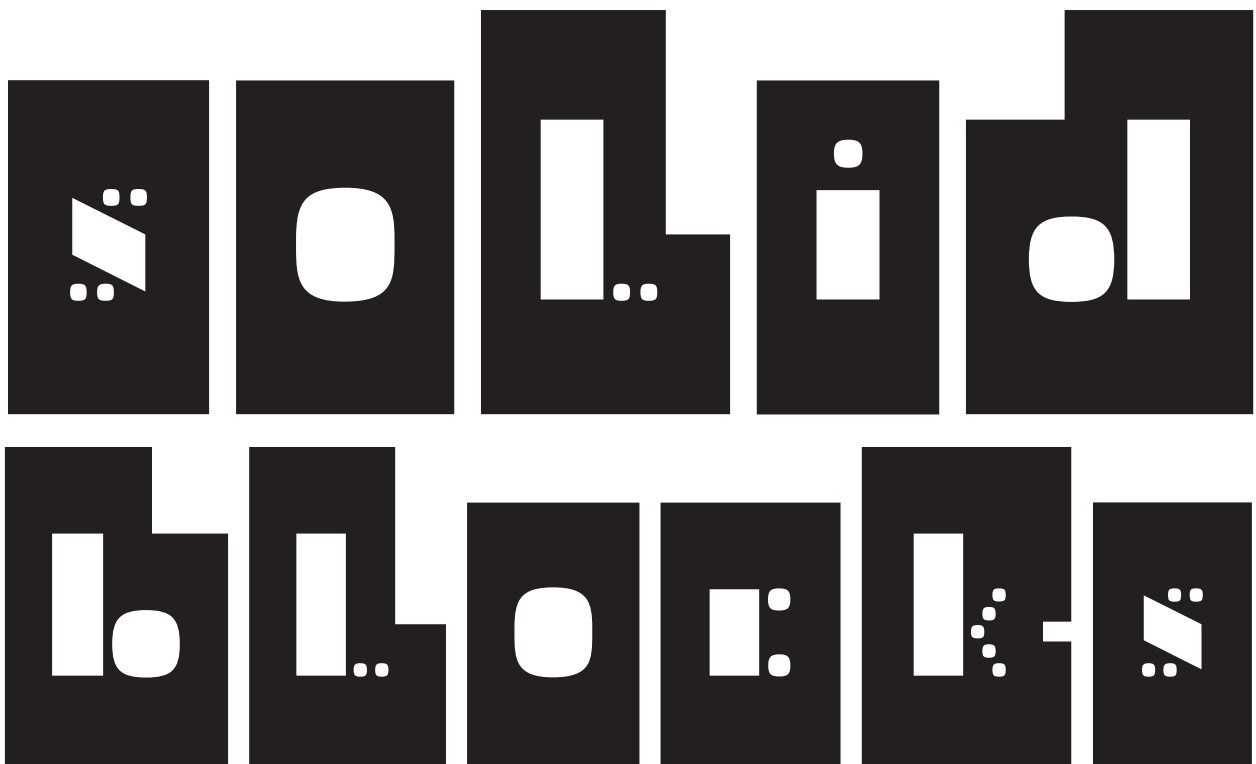
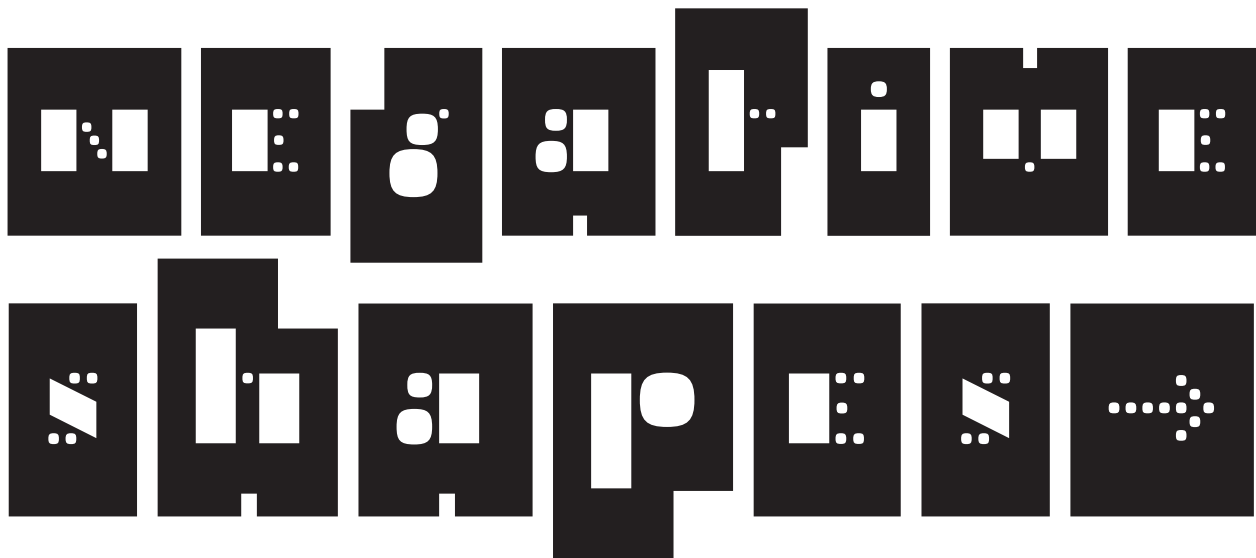
In 'ABF Silhouette' the ABF Petit shapes become negative space inside solid black blocks. Barely chinked or angled to suggest larger, more abstracted versions of the letters within, the imposing blocks add a wow factor to the type.

The new letters, developed for the 2009 conference on the Space and Architecture of Libraries, provide protective housing for the ABF Petit letterforms. 'ABF Silhouette' combines with and defines the playful forms of 'ABF Petit,' providing a striking counterpart to its sibling.



Philippe Apeloig  
Des bibliothèques à vivre.  
Usages, espaces, architectures

55è congrès, Paris,  
Association des bibliothécaires de  
France  
175 × 118,5 cm  
2009





6

one morning, when gregor samsa woke from troubled dreams, he found himself transformed in his

bed into a horrible vermin. he lay on his armour-like back, and if he lifted his head a little he could see

his brown belly, slightly domed and divided by arches into stiff sections. the bedding was hardly able to

8

one morning, when gregor samsa woke from troubled dreams, he found himself transformed in his bed into a horrible vermin. he lay on his armour-like back, and if he lifted

his head a little he could see his brown belly, slightly domed and divided by arches into stiff sections. the bedding was hardly able to cover it and seemed ready

12

one morning, when gregor samsa woke from troubled dreams, he found himself transformed in his bed into a horrible vermin. he lay on his armour-like back, and if he lifted his head

16

one morning, when gregor samsa woke from troubled dreams, he found himself transformed in his bed into a horrible vermin. he lay on his armour-like back, and if he lifted his head a little he



Uppercase / Lowercase

|  |  |  |  |  |  |  |  |  |  |  |  |  |
|--|--|--|--|--|--|--|--|--|--|--|--|--|
|  |  |  |  |  |  |  |  |  |  |  |  |  |
|  |  |  |  |  |  |  |  |  |  |  |  |  |

Accented Uppercase / Lowercase

|  |  |  |  |  |  |  |  |  |  |  |  |  |
|--|--|--|--|--|--|--|--|--|--|--|--|--|
|  |  |  |  |  |  |  |  |  |  |  |  |  |
|  |  |  |  |  |  |  |  |  |  |  |  |  |
|  |  |  |  |  |  |  |  |  |  |  |  |  |

Figures

|  |  |  |  |  |  |  |  |  |  |  |  |  |
|--|--|--|--|--|--|--|--|--|--|--|--|--|
|  |  |  |  |  |  |  |  |  |  |  |  |  |
|  |  |  |  |  |  |  |  |  |  |  |  |  |
|  |  |  |  |  |  |  |  |  |  |  |  |  |
|  |  |  |  |  |  |  |  |  |  |  |  |  |

Superscript  
Subscript

|  |  |  |  |  |  |  |  |  |  |  |  |  |
|--|--|--|--|--|--|--|--|--|--|--|--|--|
|  |  |  |  |  |  |  |  |  |  |  |  |  |
|  |  |  |  |  |  |  |  |  |  |  |  |  |

Currency, Fractions & Mathematical Signs

|  |  |  |  |  |  |  |  |  |                               |                     |  |  |
|--|--|--|--|--|--|--|--|--|-------------------------------|---------------------|--|--|
|  |  |  |  |  |  |  |  |  | <td><td></td><td></td> </td>  | <td></td> <td></td> |  |  |
|  |  |  |  |  |  |  |  |  | <td></td> <td></td> <td></td> |                     |  |  |
|  |  |  |  |  |  |  |  |  |                               |                     |  |  |

Punctuation & Ideographs

|  |  |  |  |  |  |  |  |  |  |  |  |  |
|--|--|--|--|--|--|--|--|--|--|--|--|--|
|  |  |  |  |  |  |  |  |  |  |  |  |  |
|  |  |  |  |  |  |  |  |  |  |  |  |  |
|  |  |  |  |  |  |  |  |  |  |  |  |  |
|  |  |  |  |  |  |  |  |  |  |  |  |  |

Arrows & Alternates

|  |  |  |  |  |  |  |  |  |  |  |  |  |
|--|--|--|--|--|--|--|--|--|--|--|--|--|
|  |  |  |  |  |  |  |  |  |  |  |  |  |
|  |  |  |  |  |  |  |  |  |  |  |  |  |
|  |  |  |  |  |  |  |  |  |  |  |  |  |
|  |  |  |  |  |  |  |  |  |  |  |  |  |



Discretional Ligatures



Stylistic Alternates 01



Stylistic Alternates 01



Fractions



Slashed Zero



Stylistic Alternates 03



Subscript / Denominators



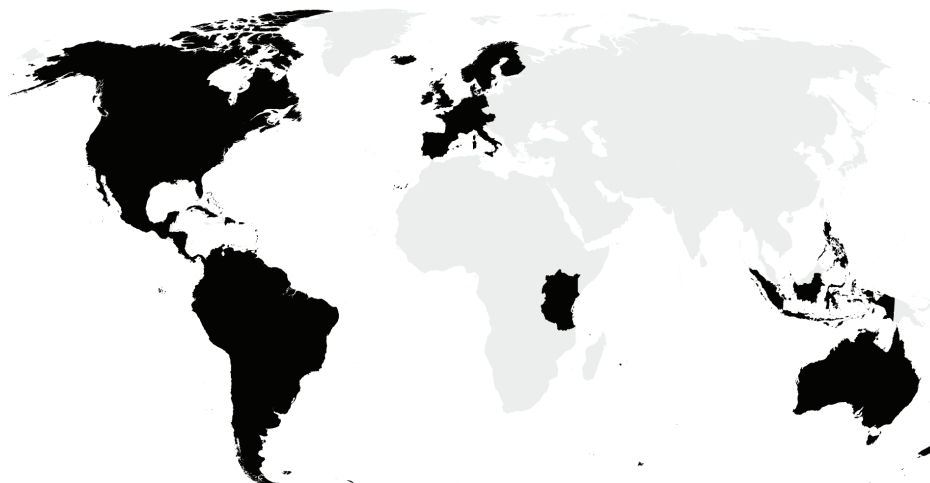
Superscript / Numerators



Stylistic Alternates 04



Language and codepage support



Supported Character Set

Tables:  
Unicode Basic Latin,  
Latin-1 Supplement

Supported languages

Albanian  
Danish  
Dutch  
English  
Estonian  
Faroese  
Finnish  
Flemish  
French  
German  
Icelandic

Indonesian  
Irish  
Italian  
Malay  
Norwegian  
Portuguese  
Scottish Gaelic  
Spanish  
Swahili  
Swedish  
Swissgerman  
Tagalog



# That's it!

## Ordering

Online ordering is the fastest and most convenient way to order and receive your fonts. After payment you will instantly receive your fonts via mail. All fonts are exclusively available through our website: [www.nouvellenoire.ch](http://www.nouvellenoire.ch)

## Desktop Licence

To install the typeface onto a desktop machine or server that distributes to a number of desktop machines, a desktop licence must be purchased.

## Web Self-hosting Licence

To embed the typeface onto a website, a Web Self-hosting License must be purchased.

## Testing fonts (Trust License)

We believe that font testing should be as simple as possible. Therefore we offer all our fonts as trial versions for free. Just go through the purchase process as if you would buy the font and select the 'Trust License' button before checkout. If you like the typeface, drop us a friendly line and we will get back to you with the full version asap. Once you will use it for a project you will need to buy the license according to your use.

## Basic vs Standard

Please check [Glyph Sheet + Language Support](#) page to get detailed informations about the character set.

## Designer

Philippe Apeloig

## Development

Nouvelle Noire

## Publisher

Nouvelle Noire GmbH, Zürich

## Version

1.0

## Release

2013

## Terms and Conditions

All information in this PDF is checked carefully nevertheless, we can not guarantee and do not take any responsibility that there are no wrong informations or failures.

This Specimen PDF was created in February 2018. Please check our website for perhaps updated version.

## Specimen Design

Clovis Vallois + Anton Studer  
Nouvelle Noire © 2012 – 2018  
All rights reserved

Nouvelle Noire GmbH  
Typedesign and development

Adolf-Lüchinger-Str. 97  
8045 Zürich, Switzerland

[info@nouvellenoire.ch](mailto:info@nouvellenoire.ch)  
[www.nouvellenoire.ch](http://www.nouvellenoire.ch)